

Nick Bell Design

**Exhibition
design,
wayfinding
and graphic
interiors.**



Nick
Bell
Design

Unit F
Reliance
Wharf
2-10
Hertford
Road
London
N1 5EW

+44
(0)20
7253
4015

nick@
nickbell
design.
co.uk

www.
nickbell
design.
co.uk

We are visual communicators. We design for three-dimensional interactive environments.

We provide the following services:
interpretation design, wayfinding and signage, graphic interior design, interaction design and design for audio/visual media.

We work with architects or interior designers or 3D designers to help design museums, galleries, exhibitions, visitor centres, cultural attractions, wayfinding systems, graphic installations.

We have specialised in this field for over 15 years. During that time, awards include a DBA Design Effectiveness Gold Award, three D&AD Yellow Pencils and three Design Week Winners.

© 2016

We have collaborated with the following
interior design and architecture practices:

Casson Mann
Hassell
Abell Nepp
John McAslan + Partners
Nord Architecture
Terry Farrell and Partners
Nissen Richards Studio
Metaphor
Nick Coombe Architecture
Tony Fretton Architects
ZMMA
Gustafson Porter
Jo White Design Consultants
Urban Mesh
muf architecture/art
Azman Architects

We would like to work with more.

We have collaborated on projects for the following institutions:

Barbican Centre
British Council
British Nuclear Fuels
English Heritage
Horus, Moscow
Imperial War Museum
Manchester Museum
Museum of Islamic Art, Doha
National Park Service, USA
National Maritime Museum
National Portrait Gallery
National Trust
Natural History Museum
Newcastle University
Science Museum
Tate Britain
Tyne & Wear Museums
Victoria & Albert Museum
Wellcome Trust
Wellcome Trust Genome Campus

Contents

Recent work

- 1. Exhibition design
- 2. Wayfinding and signage
- 3. **Graphic interiors**

Past work

- 4. Exhibition design
- 5. Wayfinding and signage
- 6. Graphic interiors

3^{/6}

Graphic interiors

—

Recent work

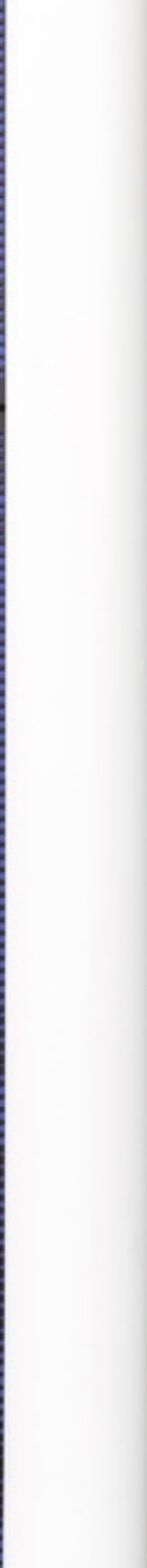
Reception space

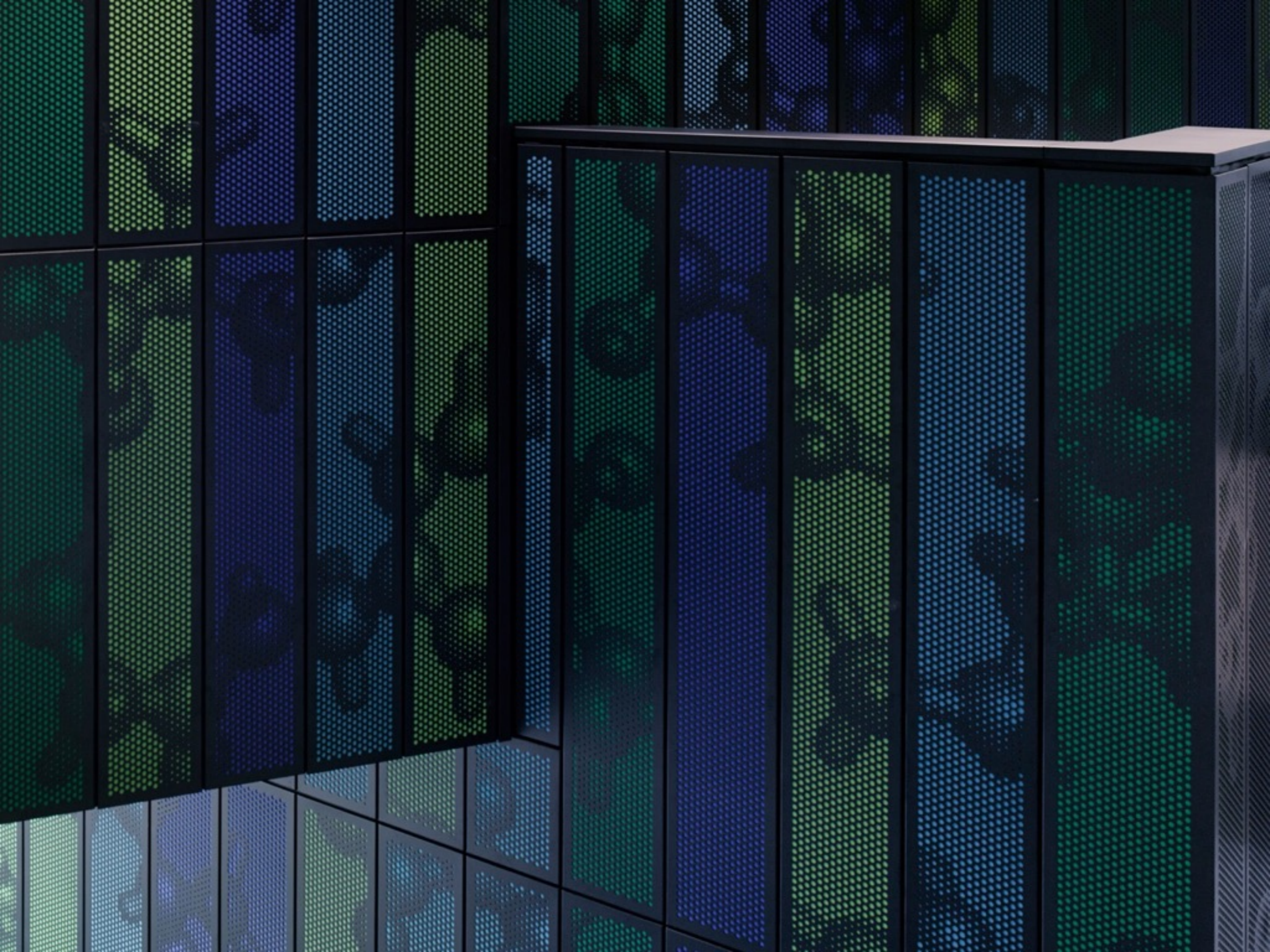
Sanger Institute, Wellcome Trust Genome Campus

Design of a graphic interior for a space aimed to encourage collaboration between campus scientists, researchers and visitors. A collaboration with Abell Nepp architects.

The walls are covered by dot-half-tone images of chemical molecules that scientists attempt to guess the identity of. Imagery is achieved by perforating a grid of interlocking steel panels mounted over Kvadrat fabric panels for acoustic softening. Glass panels are covered with clear film carrying a graphic pattern inspired by Penrose tiling. A classroom window on the ground floor carries a graphic manifestation for privacy in white that extends from the molecule pattern on the surrounding walls.

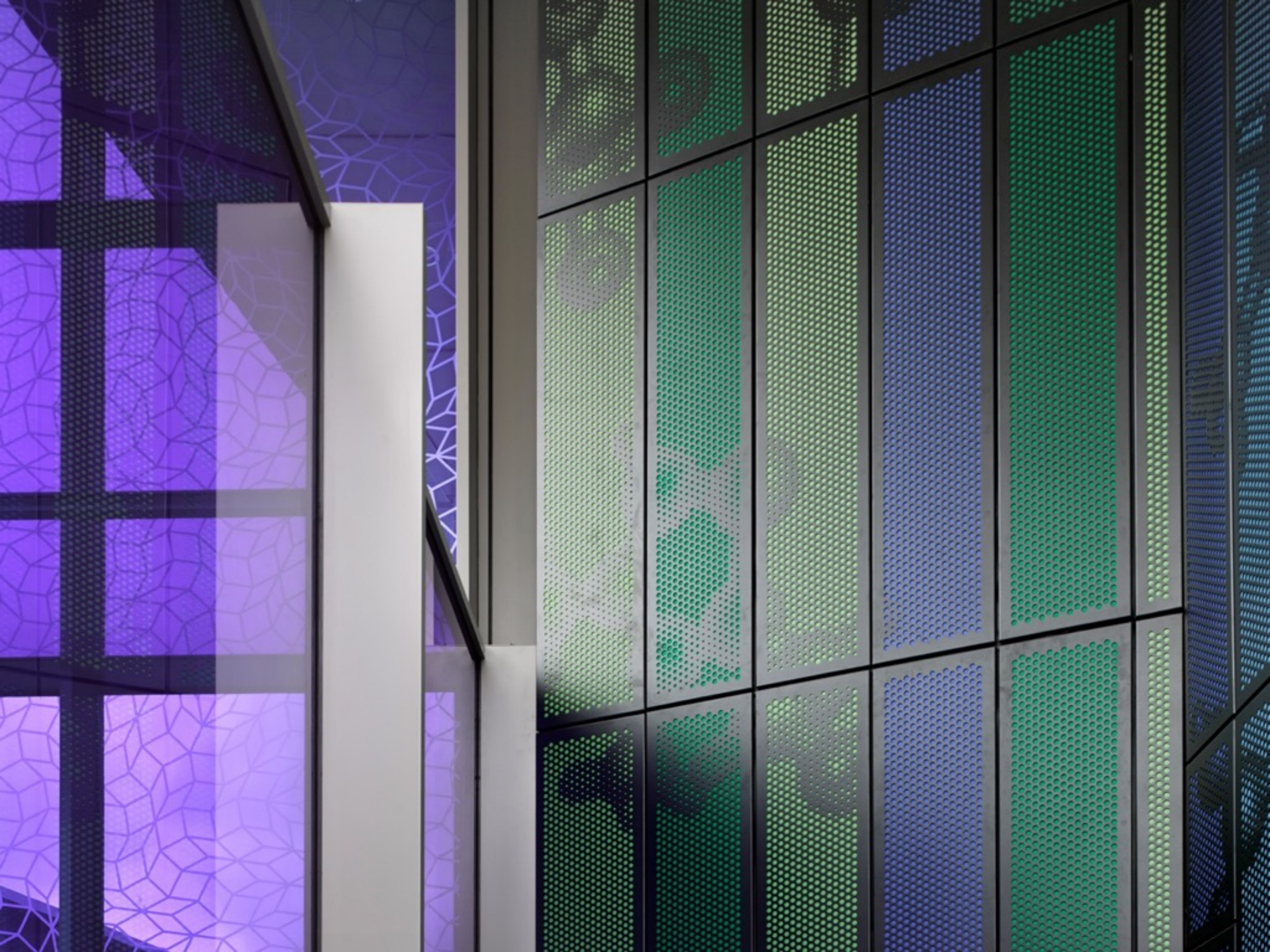














Office development St James's Square, London W1

Spatial application of graphic information to help the tenant company communicate its history of technological achievements through some key spaces in its global headquarters in the West End of London. A collaboration with interior architects Hassell.

Design features an organic linear pattern etched into concrete covered in a grid of small stainless steel 'kisses'. In an abstract way, behind the reception desk, this attempts to relate the technological expertise of the tenant company that reduces the element of risk in any new venture.

We designed an updatable, gridded exhibition display system on which the tenant can share stories of company innovation with employees.













6-MI-1







Working together for a responsible future

The Tata Steel plant in Middlesbrough is a world leader in the production of high quality steel. Working together, Tata Steel and its partners are committed to ensuring the plant's future success and the well-being of its people.



London 2012 Olympic Games Medals

The gold, silver and copper medals were minted and presented at the Tata Steel Plant in Middlesbrough. The medals were made from recycled steel and were presented to the athletes at the opening ceremony of the London 2012 Olympic Games.



London 2012 Paralympic Games Medals

The gold, silver and copper medals were minted and presented at the Tata Steel Plant in Middlesbrough. The medals were made from recycled steel and were presented to the athletes at the opening ceremony of the London 2012 Paralympic Games.



Copper

Copper is a vital metal used in a wide range of products, from electrical wiring to medical equipment. It is a renewable resource and can be recycled.




fresh start for former steel site

Iron

Iron is a vital metal used in a wide range of products, from construction to medical equipment. It is a renewable resource and can be recycled.



Collaborating to prevent fatalities

Tata Steel is committed to ensuring the safety of its people and the community. We are working with our partners to prevent fatalities and ensure a safe working environment.



Openness about how a country manages its natural resources is essential to ensure that all citizens benefit. The EITI Standard requires what they receive from extractive companies and for these companies to disclose how much they pay.



Narwanji 1

Celebration for landmark participation agreement

2014 saw the tenth anniversary of the landmark Agreements for Participation with the Gija and Ntawung Traditional Owners.

The agreement acknowledges that they are the traditional custodians of the land on which mining takes place, while they in turn recognise Agreements for Participation as a key to future generations as well as training, employment and business opportunities, and gives Aboriginal people a voice in mining decisions.

Iron ore

Iron ore

Iron is a key ingredient in the production of steel – an essential part of modern living used in a myriad of applications, from buildings to cars, machinery to appliances.



Bauxite

Bauxite

Bauxite is the primary ore used to make aluminium. It is one of the most abundant minerals in the Earth's crust. Bauxite is a soft, earthy material which is refined to produce aluminium metal which is then used in a wide range of applications.





B

Kimberlite

Kimberlite

Kimberlite

Kimberlite

Kimberlite

Kimberlite

Kimberlite

Kimberlite

Kimberlite

Kimberlite

Kimberlite

Kimberlite

Kimberlite

Kimberlite

Kimberlite

Kimberlite

Kimberlite

Office development Babmaes Street, London W1

Interior design of reception space at a new office development in London's West End. A collaboration with interior design studio Jo White Design Consultants.

Photograph of trees converted to dot-half-tone and punched into steel panels. Perforated panels are backlit with a reflective plain copper backdrop that creates a warm sunset-like lighting effect.





Keir Hardie Room

Redhouse Old Town Hall

Merthyr Tydfil

On the floor in the entrance to Merthyr Tydfil Old Town Hall is a mosaic from 1896 depicting a red dragon. It is claimed this very dragon, carrying the words 'y ddraig goch ddyry cychwyn' ('the red dragon inspires action') was one of the first instances in modern times that the red dragon was used to represent Wales. This mosaic was refurbished retaining the crack that cuts through it as a symbol of the treatment of Merthyr Tydfil during the post-industrial era.

We chose to commemorate this by commissioning the design of a carpet for the room from where the first Labour MP Keir Hardie gave his election victory speech in 1901. The carpet features the red dragon roundel and carries with it the crack.



CRANE
DUNN
JACKFIELD











Offices

European Bioinformatics Institute, Wellcome Trust Genome Campus

Design of privacy screening graphic printed to clear film and adhered to double glazed glass office walls for the new South Building at the Wellcome Trust Genome Campus. Graphic based on genome data science that looks for anomalous irregularities (mutations) in ordered repetitive patterns of data.











